

A large, light beige, stylized letter 'G' that serves as a background logo for the entire page. It is positioned centrally and spans most of the vertical height of the image.

DESIGNS

& INSPIRING SPACES

SERIP

Since 1961



Welcome

To 63 Designs & Inspiring Spaces

Embark on this journey through artistry and creativity, where each piece perfectly blends luxury and the beauty of nature. As we celebrate Serip's 63rd anniversary, we proudly present 63 Designs & Inspiring Spaces, a book that showcases more than six decades of craftsmanship and illustrates how our pieces transform environments into refined expressions of elegance and individuality.

Within these pages, you will find an exquisite range of décors, each distinct yet united by a commitment to sophistication and organic beauty. Each design narrates its own compelling story, revealing how our thoughtfully crafted elements can elevate various environments, from contemporary chic to timeless tradition.

As you immerse yourself in this book, let it inspire you to envision spaces that resonate with your unique style while celebrating a deep connection to the natural world. Together, we can weave a tapestry of magic and wonder, transforming the ordinary into the extraordinary.

The First Drizzle of Spring

Project by L'atelier Fantasia

Above the elegant dining table, a breathtaking **Aqua Collection** chandelier takes center stage. This extraordinary piece is a true showstopper, combining a captivating cast in gold with a mesmerizing glass fixture resembling iridescent drops of rain in various shades of blue, glistening like dew on a spring morning.

A standout element in the room is the mesmerizing Serip installation. Turning your gaze toward one side of the bed, you'll find yet another design treasure — an enchanting piece from the **Mondrian Collection**.

Meet the Design Studio

L'atelier Fantasia

L'Atelier Fantasia is born from a poem that the design director read as a child and that took her along the paths of interior design. The design studio has many years of experience with the support of highly respected construction companies that assist in the realization of projects.



On This Project

Products



Aqua
Empire
Large



Mondrian
Suspension Coastline
Medium



Mondrian
Suspension Coastline
Small

A Lunar Entrance

Project by L'atelier Fantasia

Entrance halls receive the most attention when it comes to a home. This needs to be as welcoming, tidy as possible. Regarding its decoration, it should not be forgotten when redesigning a house.

Starting with the double doors with a relief in earth tones, going through the black floor with silver ornaments that perfectly match the shapes of the lamp chosen to decorate the main wall of this hall, the chandelier of the **Luna Collection**.

Meet the Design Studio

L'atelier Fantasia

L'Atelier Fantasia is born from a poem that the design director read as a child and that took her along the paths of interior design. The design studio has many years of experience with the support of highly respected construction companies that assist in the realization of projects.



On This Project

Products



Luna
Orbit
Large



Luna
Orbit
Medium



Luna
Orbit
Small

Marble Apartment

Project by V.Concept Studio | Photography by Sergii Savchenko

The harmony among its elements it's what sets this project apart, designing each space in a unique way, to create balance between art and functionality, always keeping elegance in the foreground.

The “Modern Chic” spirit that characterizes the Modern Apartment shines through the richness of the material, such as marble, elegant textiles and the designer lighting, highlighting the lamp from Serip's **Bijout Collection**.

Meet the Design Studio

V.Concept Studio

V.Concept Studio was founded by Victoria Vitkovskaya in 2015 and is formed by 12 experienced professionals. Its projects have already won the SBID International Design Award and the International Property Award, among others.



On This Project

Products



Bijout
Oval
Medium

A Fusion of Comfort and Modernity

Project by V.Concept Studio | Photography by Sergii Savchenko

For the development of this project, the best combinations of texture and color were used, to create the perfect balance between minimalism and elegance.

To that end, the dining room is illuminated by an elegant and sophisticated piece from the **Mondrian Collection**. This work of art is inspired by the desert landscapes and takes our imagination to the gentle dance performed by the wind and the sand over the great dunes. It is the very definition of the “Modern Chic”, in which a concept of subtle beauty becomes evident in every room of this apartment.

Meet the Design Studio

V.Concept Studio

V.Concept Studio was founded by Victoria Vitkovskaya in 2015 and is formed by 12 experienced professionals. Its projects have already won the SBID International Design Award and the International Property Award, among others.



On This Project

Products



Mondrian
Suspension Coastline
Large



Mondrian
Suspension Coastline
Medium

An Aura of Luxury

Project by Ample Design

This private residence in the Parkview urban complex embodies a design inspired by the constant movement of the water representations that plunge this space in a serene elegance.

The nobleness of the materials, such as the high-quality marble and the wood of the panels that cover the walls, impresses an aura of luxury and conveys the essence and the fluidity of the natural water motifs represented by the pieces of the **Waterfall** and **Glamour** Collections.

Meet the Design Studio

Ample Design

Ample Design has garnered a reputation for delivering outstanding creative work across a broad field of expertise that includes award winning interior design, project management and consultation, construction and renovation, interior branding and styling services.



On This Project

Products



**Glamour
Dripstone
Medium**



**Waterfall
Straw
Quad**

The Picturesque Cottage Village

Project by *Fifth Avenue*

On the dining table is nothing less than the manifestation of the waterfalls itself. The fantastic composition of the chandelier from the **Niagara Collection** is perfect in this area of the house, combining magnificently with the table in dark with golden feet.

The living room has a wonderful chandelier from the **Waterfall Collection**, a grand visual presence where the intertwining of the branches is visible with the curtains chosen for this division.

Meet the Design Studio

Fifth Avenue

The team of Fifth Avenue are design and decoration professionals who bring any ideas or solutions into a sophisticated reality, no matter what style they are – contemporary, classic or timeless.

FIFTH AVENUE



On This Project

Products



Niagara
Meander
A+A



Waterfall
Torus
Medium

Garden Quarters Bourgeois Elegance

Project by Match Architects | Photography by Mikhail Loskutov

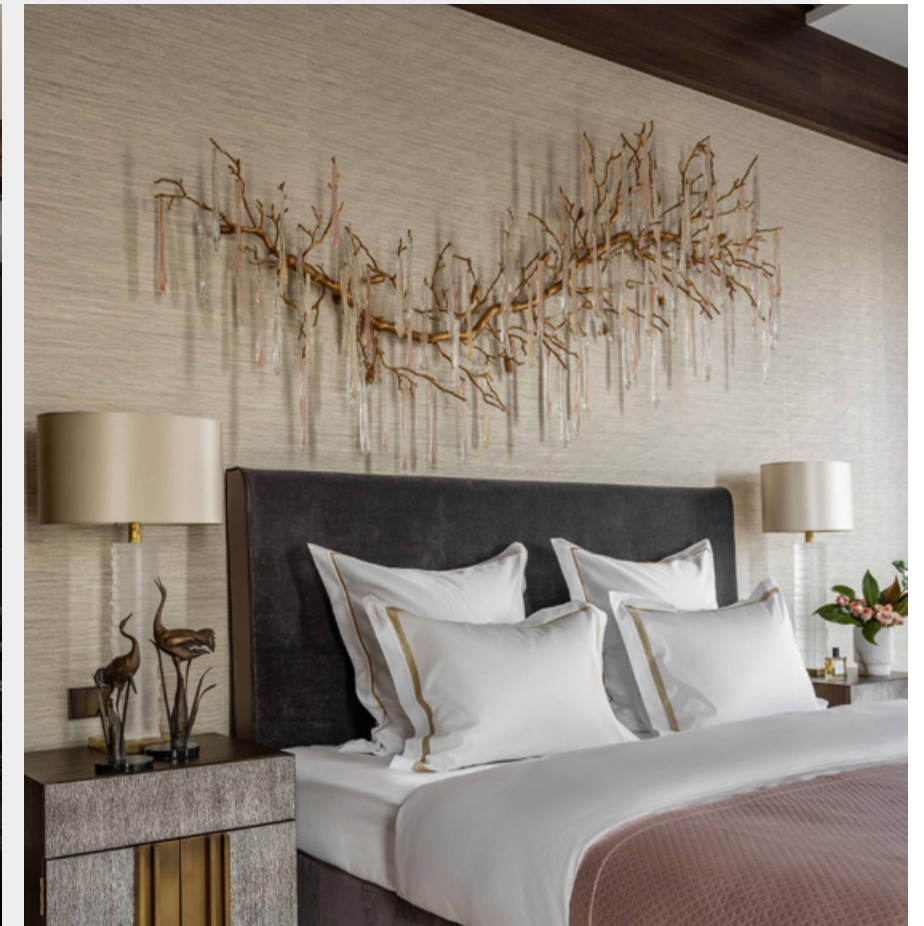
Let yourself be amazed by this magnificent project that features more than one Serip collection.

In the living room, we see the imposing suspension from **Niagara Collection** that matches perfectly with the neutral tones chosen. The bedroom presents a **Glamour Collection** wall light over the bed that makes the whole ambiance even more charming and cozy. And the finishing touch was made by the **Luna Collection** chandelier in the bathroom, showing the beauty and versatility of applying our sculptures.

Meet the Design Studio

Match Architects

Each new project for this studio is an unusual and interesting new story, which is created, adhering to the principles of sophistication and harmony of forms, adapted to the uniqueness and characteristics of the client.



On This Project

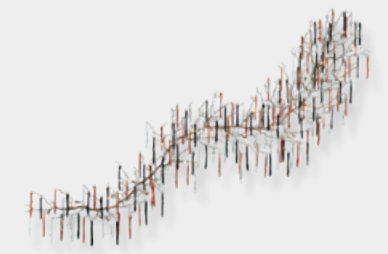
Products



Niagara
Meander
A+A



Luna
Clover
Organic



Glamour
Icicle
Large

A Project Lead by the Colours

Project by *Design Studio Element*

The turquoise variations that paint the sofas and curtains, give a feeling of proximity to unimaginable nature, combining with the **Aqua Collection** that, as a centerpiece, makes the environment even more charming.

Another piece that we can highlight is the **Icarus Collection**, inspired by the arched shape of a water fountain, Fountain that was frozen and immortalized to represent the lighting in the wonderful indoor pool spa area.

Meet the Design Studio

Design Studio Element

Graduated from the International School of Design in Moscow, in 2010 in partnership with Diana Bespaeva, Natalia Malova founded Element Design Studio. Alina Pribylova is responsible for several projects in the field of interior design throughout Kazakhstan, as well as Moscow and St. Petersburg.

Design Studio Element



On This Project

Products



Aqua
Empire
Medium



Icarus
Daedalus
Wall

A Touch of fun Exuberance

Project by Love Design | Photography by Inês Franco

The predominance of whites, the use of furniture and other details in golden tones and also, the bold bet on the **Aqua Collection** for lighting, demonstrates the elegance and touch of sophistication that is intended to show in the presentation of both areas.

The large windows allow a view of the pool in the outdoor area and it is from this perspective that it is possible to see a cosmopolitan house with a lot of personality.

Meet the Design Studio

Love Design

LoveDesign presents itself in the Portuguese market for more than 20 years and has a very experienced team that carry out each project as a new challenge, with the greatest commitment and dedication.

LOVE
design

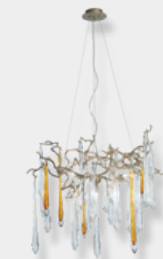


On This Project

Products



Aqua
Tailor
Made



Aqua
Empire
Small

The Harmonious House in Simcoe Lake

Project by *One x One Design*

Harmony was achieved by mixing elements such as metal inserts in the natural stone backdrop, a breathtaking upside-down tree chandelier from **Glamour Collection** taking root in the 300-year old reclaimed elm ceiling, and using natural and synthetic light as a feature element of design to add dimension and texture to each space.

The kitchen cabinetry was designed in white oak and whitewashed to create a monochromatic esthetic showcasing the beauty of the **Liquid Collection** chandelier.

Meet the Design Studio

One x One Design

ONE X ONE DESIGN is a leading design and build firm from Toronto, Canada helmed by its Founder and Creative Director, Hilda Mohseni, and established its operation in the late 1990s.

ONEXONE
DESIGN



On This Project

Products



Glamour
Stalactite
Large



Liquid
Drip
Decuplet

Shine Like a Jewel

Project by L'atelier Fantasia

Walking through the dining area, over the table, the **Folio Collection** with its distinctive foliage of gold and crystal, creates a dynamic silhouette echoing the emerald stone color of the long stone dining table.

To delineate the transition between rooms, our **Waterfall Collection** wall lamps were carefully chosen to match the accents of the décor. Inspired by nature's cascading waterfalls, these fixtures add fluidity and personality to the vibrant surroundings.

Meet the Design Studio

L'atelier Fantasia

L'Atelier Fantasia is born from a poem that the design director read as a child and that took her along the paths of interior design. The design studio has many years of experience with the support of highly respected construction companies that assist in the realization of projects.



On This Project

Products



**Folio
Branch
Medium**



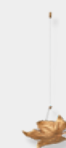
**Folio
Branch
Small**



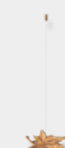
**Folio
Maple
Male**



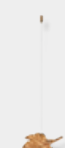
**Folio
Simple Glass
Medium B**



**Folio
Simple Metal
Large A**



**Folio
Simple Metal
Medium B**



**Folio
Simple Metal
Small**



**Waterfall
Segmented
Slim**

The Central Park Collector

Project by Eberlein Design

Drenched in soothing blues, the space serves as a canvas for diverse art pieces, including paintings, prints, pottery, artifacts, and sculptures. Amidst **Nenufar Collection**, the baby blue decor elements add a subtle yet refreshing touch, infusing the room with a sense of serenity and tranquility.

The mirror walls, strategically placed to reflect and amplify the surrounding artworks, create an illusion of spaciousness while doubling the visual impact of the room's artistic ensemble.

Meet the Design Studio

Eberlein Design

Founded in 1984, Eberlein Design Consultants Ltd. has built its award-winning reputation for elegant and unique interiors through one simple approach: listening. They listen carefully to their clients to discern their personalities and their passions.

EBERLEIN



On This Project

Products



Nenufar
Blooming
Medium

Paris Quarter

Project by Akka Interiors | Photography by Sergey Krasyuk

The dining area was conceptualized as a focal point for gatherings and celebrations, where family and friends could come together to create lasting memories.

The placement of the **Bijout Collection** chandelier above the dining table not only provides essential illumination but also serves as a captivating centerpiece. Crafted in radiant gold and adorned with delicate glass elements resembling shimmering jewelry, it captivates the eye with its graceful design and luminous presence.

Meet the Design Studio

Akka Interiors

AKKA Interiors, led by Aizhana Kunaeva and Aidan Koshoombayeva, specializes in creating meaningful and soulful private interiors. Their team combines expertise in crafting comfortable, cozy spaces with enduring style.



On This Project

Products



Bijout
Oval
Large

Harmony in Pastel Tones

Project by Aysha Nassar Interiors

The Aysha Nassar's decor project blends pastel soft tones, harmonizing colors and textures to craft an inviting atmosphere that radiates peace and luxury. The soothing palette of lavender, beige, and grey envelopes the space, with each hue meticulously chosen to evoke serenity and sophistication. At the room's center, the exquisite **Aqua Collection** hangs gracefully, its ethereal light enhancing the tranquil ambiance and adding inspiring elegance. The circular layout accentuates the cohesive design, inviting relaxation and immersion in the soothing environment.

Meet the Design Studio

Aysha Nassar Interiors

Aysha Nassar Interiors provides interior design, and bespoke craftsmanship. Their team is prepared to tackle design obstacles no matter the complexity, scale, and scope in an elegant, timeless approach that captures the clients' vision and dreams.



On This Project

Products



Aqua
Empire
Medium

A Sense of Luxurious Homeliness

Project by Designworx

The entrance foyer is marked by a 6 meter wall, where the dramatic bronze and glass chandelier from the **Coral Collection** is presented. Its interwoven structure inspired by the natural complexity of the forms of coral reefs merges with the worked walls creating a simply brilliant effect.

The dining area faces the swimming pool and is surrounded by a millimeter-level garden created to obtain an Amazonian view. Once again the ceiling is decorated with a little bit of nature with the chandelier from the **Nenufar Collection** inspired by watery nature.

Meet the Design Studio

Designworx

Designworx is a multi-award winning interior design company based in Singapore. Led by Terri Tan, for more than two decades of his existence, the creative director left his mark in many interior spaces in Singapore.

DESIGNWORX

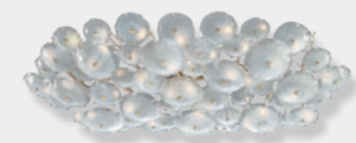


On This Project

Products



Coral
Zoa Eye
Extra Large



Nenufar
Victoria
Oval

Chalet Le Rocher

Project by Covarel Architecture

Chalet Le Rocher in Val d'Isère is a breathtaking fusion of luxury and rustic elegance, where the natural beauty of the mountains meets the refined artistry of Serip chandeliers. The designer has masterfully crafted a space that marries the warmth of fur blankets, rich wood walls, and ceilings with the radiant allure of **Aqua**, **Glamour** and **Bijout** Collections.

Each chandelier brings a delicate shimmer that contrasts beautifully with the raw textures, creating a harmonious blend of nature and sophistication.



Meet the Interior Designer

Covarel Architecture

Established in 1972 by Gérard Covarel, Covarel Architecture combines traditional alpine design with modern trends. Based in the French Alps, the firm specializes in hotels, homes, and chalets, offering personalized service on projects across the region and internationally.



On This Project

Products



Aqua
Funnel
Medium



Glamour
Glaze
Medium



Bijout
Crab
Queen

A Harmonious Blend of Color

Project by L'atelier Fantasia

As usual, L'Atelier Fantasia loves to mix bold tones against a clean and subtle base. And how beautifully they combined powerful shades in this dining room! Terracotta and mustard set against a beige backdrop with hints of gold.

The customization options of Serip pieces allowed the designer to tailor a creation from the **Bijout Collection**, selecting glass in shades of red, purple, and mustard to perfectly complement the chosen tones of the room's details. And of course, the gold cast perfectly matches all the details.

Meet the Design Studio

L'atelier Fantasia

L'Atelier Fantasia is born from a poem that the design director read as a child and that took her along the paths of interior design. The design studio has many years of experience with the support of highly respected construction companies that assist in the realization of projects.



On This Project

Products



Bijout
Oval
Extra Large

A Volcanic Landscape

Project by KNS Architects

The design evokes the heart of a volcanic landscape, but instead of chaos, there's an overwhelming sense of harmony. KNS Architects have masterfully created a space where elements converge in a striking yet effortless balance.

The glowing amber stone floor shimmers like molten lava beneath your feet, reflecting the warm, golden hues of the **Nenufar Collection** chandelier, with its vibrant orange Murano glass and gold accents. Dark, rich brown walls ground the room, evoking the earth's ancient, unyielding core.

Meet the Design Studio

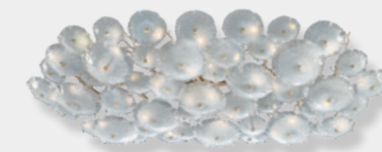
KNS Architects

KNS Architects is a team of passionate architects and designers, supported by development partners, engineers, and consultants. As pioneers of change, they shape India's architectural landscape while representing Indian design on a global stage.



On This Project

Products



Nenufar
Victoria
Oval

A Blend of Artistry and Sophistication

Project by Kris Turnbull

In Kris Turnbull's refined design, a grand spiral staircase in rich brown and crisp white wood exudes timeless elegance.

The **Waterfall Collection** chandelier above cascades with golden grace and shimmering glass, creating a breathtaking display of luxury. Meanwhile, the **Aqua Collection** chandelier in the bold blue kitchen complements the space with its serene, luminous beauty, further reflecting the designer masterful blend of artistry and sophistication.

Meet the Design Studio

Kris Turnbull

Kris and his team create bespoke designs with meticulous attention to detail, handling prestigious properties and respecting their heritage while guiding clients from concept to completion.



On This Project

Products



Aqua
Tailor
Made



Waterfall
Straw
Triple

A Crisp Autumnal Morning

Project by Maisha Design | Photography by Richard Gooding

Nestled within Maisha Design visionary living room design in Interlaken, an ethereal fusion of serene blue-grey and soothing beige hues form the backdrop, echoing the tranquil essence of a crisp autumnal morning. Suspended from the ceiling like delicate whispers frozen in time, the **Folio Collection** steals the spotlight.

Each piece, meticulously crafted and curated, hangs elegantly in the air, an embodiment of nature's grace captured in copper cast and transparent glass.

Meet the Design Studio

Maisha Design

Maisha Design, a London-based interior design practice, is renowned for its luxurious and timeless design solutions for both residential and commercial spaces. Every project is tailored and completed with bespoke pieces, offering a truly unique experience.

MAISHA
DESIGN



On This Project

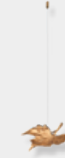
Products


Folio
Simple Glass
Medium A


Folio
Simple Glass
Medium B


Folio
Simple Metal
Large A


Folio
Simple Metal
Large B


Folio
Simple Metal
Medium A


Folio
Simple Metal
Medium B

Nature, the Contemporary Beauty of Modernity

Project by Nef Design Studio

Nature beautifully intertwines with contemporary elegance in this stunning interior. Light-colored wooden paneling sets a rustic yet sophisticated tone, creating a warm and inviting atmosphere. A standout feature is the curtain from the **Aqua Collection**, which showcases flowing glass drops that evoke the essence of water, seamlessly connecting the indoor space to the natural world. Above the dining table, a breathtaking chandelier takes center stage, resembling delicate branches adorned with cascading glass sculptures.



Meet the Design Studio

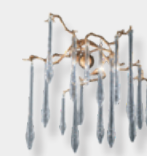
Nef Design Studio

Sergio Demurin, founder of NEF Design Studio, brings over 12 years of experience in creating beautiful, functional interiors. With degrees from Kuenji Art School and Kharkiv State Academy of Design and Arts, he combines creativity with precise project oversight.



On This Project

Products



Aqua
Salix
Wall



Aqua
Trellis
Small



Aqua
Empire
Small



Aqua
Curtain
Small

A Wintry Wonderland

Project by Archimania

Stepping through the ornate brown doors feels like entering a realm of pure elegance. The living room features pieces from the **Glamour Collection** with stunning silver sculptures that resemble trees adorned with icy droplets. Each branch sparkles like frozen tears, creating a wintry wonderland effect. The silver tones fill the space with a soft, shimmering light, while plush yellow, orange, and purple details add vibrant warmth.

The **Aqua Collection** wall lamps enhance this sophisticated ambiance.

Meet the Design Studio

Archimania

The studio was founded by Mila Uzikova and provides a full range of services in architectural design and interior design for residential and public spaces.



On This Project

Products



Aqua
Brise
Wall



Glamour
Glaze
Medium



Glamour
Glaze
Large

The First Blooms of Spring

Project by Alla Abramova | Photography by Andrey Avdeenko

Abramova Interiors' latest project beautifully blends nature's splendor with intricate detailing. Using light, sober tones with verdant accents and vibrant floral hues, the design is brought to life.

Gold elements and the **Bijout Collection** ceiling lamp create elegant contrasts and reflective points of light, enhancing the serene atmosphere.

In the kitchen, nature meets modern elegance with rich wooden textures, soft beige tones, and a sophisticated stripe stone pattern. Taupe leather chairs add comfort and style, while the **Liquid Collection** suspensions create a captivating silver glow, evoking the graceful fall of water droplets.

Meet the Interior Designer

Alla Abramova

Alla Abramova, after years of studio experience, now designs residential interiors solo, focusing on personalized spaces inspired by people, art, and nature.



On This Project

Products



**Liquid
Drip**
Tailor-Made



**Bijout
Oval**
Extra Large

Urban Chic – Style with a Statement

Project by Simone Arora | Photography by Fabien Charuau

This high-end residential is filled with a neutral colour palette and enriched by the expansive greenery outside.

Here the **Niagara Collection** was selected to complete this contemporary apartment, with two wall lamps that frame the large mirror further accentuates the feeling of space in this rather large living-dining area, and two ceiling lamps that have become the highlighting pieces that represent in a unique way the fluid movement of water with organic patterns in a game of transparency and opacity.

Meet the Interior Designer

Simone Arora

From Mumbai, Simone Arora, is a well-known interior designer, a resource for design ideas and inspirations that elevates and enhances living spaces.

Arora is known for her discerning eye, one that is faultless when it comes to colour, functionality and form.



On This Project

Products



Niagara
Cascade
Tailor-Made



Niagara
River
Tailor-Made



Niagara
Island
Tailor-Made

An Aesthetic Immersion in Moscow

Project by Studio Interno | Photography by Sergey Ananiev

For ceiling lighting in this room, not one, but two chandeliers from the **Aqua Collection** were chosen. Considered one of our bestsellers, these pieces specifically create a very clear allusion with their inspiration where the bronze structure expands in tangled branches that lead to a piece of floating glass.

On the path that connects to the bedrooms, another bestseller lights up the ceiling of yet another space. It is the **Bijout Collection**.

Meet the Design Studio

Studio Interno

The Studio Interno is a design studio present in the market for over 15 years and are involved in projects in like residential, public interiors with any type of complexity, style and requirement.



On This Project

Products



Aqua
Funnel
Medium



Bijout
Oval
Medium

Voice of Generations

Project by V.Concept Studio | Photography by Sergii Savchenko

This project revitalizes a home with two decades of history, blending timeless Art Deco elegance with modern design. V. Concept Studio used earthy tones, pinks, and greens to highlight the **Coral Collection** chandelier and **Glamour Collection** wall pieces, creating warmth and opulence.

As you ascend the stairs, a curtain from the **Aqua Collection** adorns the wall, linking luxury with the tranquility of nature. In the bedroom, a jungle-inspired design with a **Luna Collection** wall lamp casts a soft glow, merging dreams and reality.

Meet the Design Studio

V.Concept Studio

V.Concept Studio was founded by Victoria Vitkovskaya in 2015 and is formed by 12 experienced professionals. Its projects have already won the SBID International Design Award and the International Property Award, among others.



On This Project

Products



Aqua
Salix
Wall



Luna
Orbit
Small



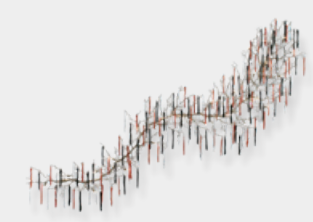
Luna
Orbit
Large



Aqua
Curtain
Small



Coral
Royal
Empress



Glamour
Iccle
Large

The Canton Close House

Project by Anvari Design

Quoting Anvari Design, the entrance of a home sets the tone for what awaits you inside. So, recognising the significance of making a memorable first impression, Anvari Design carefully selected the lighting to draw attention. From the entrance, you can get immediately a glimpse of the dining room where stands, above an elegant table, a Serip design.

This **Aqua Collection** design, incorporating subtle nodes to organic shapes and forms, gave to the space a touch of elegance, uniqueness, harmony and sophistication.

Meet the Design Studio

Anvari Design

Anvari Design, launched by Parinaz Nia in 2014, offers a highly personalised, tailored service, based on an in-depth assessment of each client's requirements and appreciation of the design objectives required.



On This Project

Products



Aqua
Makrama

Rumi Festival Inspiration in Design

Project by B.LovedInteriors

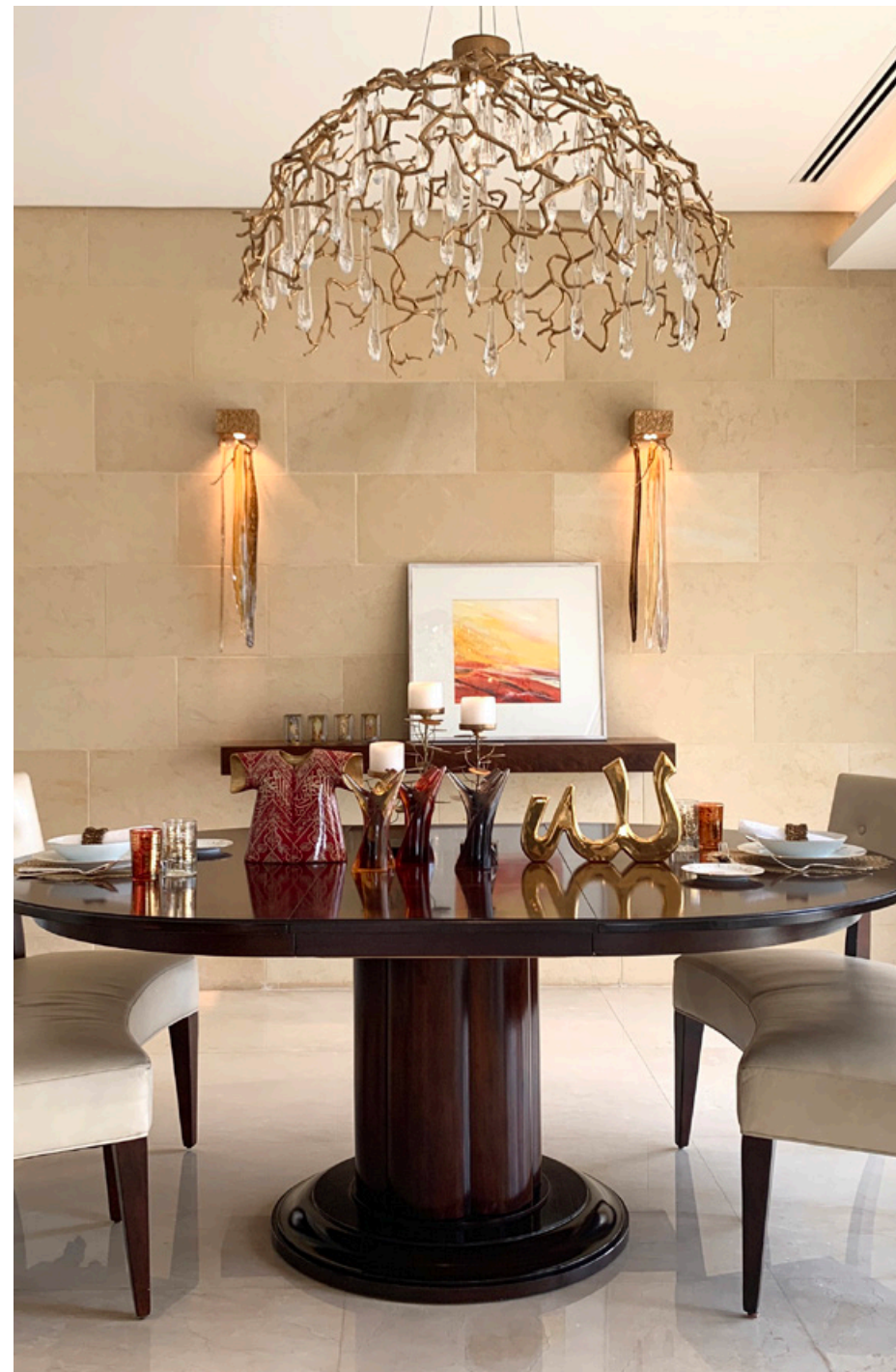
Inspired by her experience at the Rumi Festival in Konya, Bayan Malhas designed a decor project that intertwines two unique dining spaces, both radiating tranquility.

The intimate dining room features warm tones from the **Waterfall Collection** wall lamps, creating a cozy ambiance above the elegant red-brown oval table, where a stunning **Aqua Collection** piece enhances togetherness. In the spacious area, a magnificent **Bijout Collection** chandelier with vibrant blue and yellow drop glasses serves as a joyful focal point.

Meet the Design Studio

B.LovedInteriors

Bayan Malhas, founder of B. Loved Interiors, is an interior design expert with over 20 years of experience. As the first Middle East ambassador for Maison & Objet and former Editor-in-Chief of Home Magazine Jordan, she showcases her passion for global design and timeless decor.



On This Project

Products



Waterfall
Segmented
Slim



Bijout
Oval
Extra Large



Aqua
Dome
Medium

Art Nouveau Elegance Redefined

Project by Ildesignn

Symmetry takes center stage in the enchanting dining area, adorned with an intricate plaster pattern ceiling and an exquisite chandelier from the **Bijout Collection**, casting a mesmerizing radiance over the dining table.

Liquid Collection lights delicately gracing the kitchen island, resembling the sparkle of water droplets. In the staircase area, an **Aqua Collection** chandelier hanging from the ceiling adds a touch of elegance, creating a captivating focal point.

Meet the Design Studio

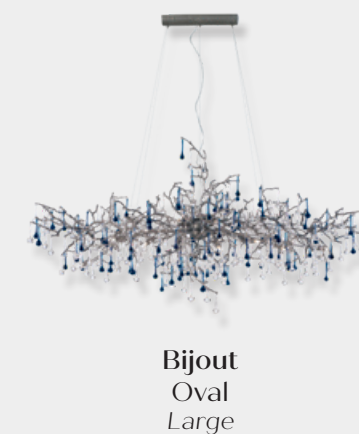
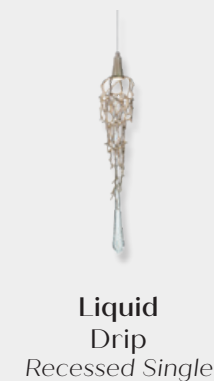
Ildesignn

ILDESIGNN specializes in creating interiors of any complexity, as well as developing private architecture. When designing interiors, they are not confined to a single local style. Their approach is to create stylish interiors that meet the client's aesthetic, ergonomic, and functional needs.



On This Project

Products



A Call for Imponence

Project by Jennifer Bevan Interiors

If you are calling for imponence, you are calling for Jennifer Bevan Interiors. She brings a touch of greatness to every project, transforming spaces into experiences. In the grand entrance, an **Aqua Collection** chandelier steals the scene, gracefully falling from a high coffered white ceiling, setting an immediate tone of elegance. In the dining room, a **Bijout Collection** chandelier was chosen to illuminate a dark, richly-varnished wooden table, where stunning glass candelabras add a touch of brilliance, warming this room as much as it's marble fireplace.

Meet the Design Studio

Jennifer Bevan Interiors

With over 25 years of industry experience, JBI is recognized for an extensive portfolio of projects that thoughtfully juxtapose classic elements and contemporary influences which allow each project to feel both fresh and distinguished, all while thoughtfully reflecting the wants and needs our diverse clientele.

JENNIFER BEVAN INTERIORS



On This Project

Products



Aqua
Parable
Medium



Bijout
Oval
Extra Large

The Porthcawl Farmhouse

Project by Chameleon Interiors

Transport yourself to the serene embrace of a Victorian period farmhouse, nestled amidst the picturesque Welsh countryside.

The fusion of antique treasures and contemporary elegance defines the Chameleon Interiors design ethos — a seamless blend of the past and present. Stepping into the sitting room, where architectural marvels meet the touch of finesse, we find a majestic oversized mirror adorning the fireplace and a bespoke handmade **Aqua Collection** chandelier.

Meet the Design Studio

Chameleon Interiors

Founded and run by Cardiff-based interior designer Yvonne Jones, Chameleon Interiors specialises in creating luxurious and sophisticated spaces for private and corporate clients.



On This Project

Products



Aqua
Empire
Medium

The Orchid House

Project by Ace Design

Nestled in a vibrant golf community in southern Chengdu, Orchid House embodies Ace Design's vision of merging sensory and spiritual experiences.

The glamorous owner, influenced by her frequent travels to Paris, has infused the space with classic elegance. Upon entering, guests are greeted by a stunning bronze **Lotus Collection** chandelier, leading them to an open area that exudes poetry and sophistication, highlighted by a golden **Bijout Collection** chandelier.

Meet the Design Studio

Ace Design

Alyssa Xie founded ACE DESIGN in 2010 to enhance contemporary housing with healthy residential design. Specializing in mansion and commercial spaces in China, the design studio emphasizes health, elegance, and warmth through its "Healthy Housing System".



On This Project

Products



Lotus
Horizontal Bloom
Medium



Bijout
Oval
Extra Large

The Venetia Vildiris Shop

Venetia Vildiris Shop

Experience the enchanting allure of the **Dandelion Collection** at Venetia Vildiris Shop, where our exquisite chandeliers have been meticulously selected to adorn the space.

Like the delicate dandelion swaying in the breeze, our chandeliers entrance with their graceful movements and ethereal glow. Inspired by nature's resilience, this collection seamlessly blends glass and metal, casting a mesmerizing interplay of light and shadow.

As you step into the store, immerse yourself in its transformed interior adorned with stunning wall lamps. These lamps intertwine delicate glass leaves with sturdy metal, showcasing a fusion of grace and strength. Each piece reflects both light and shadow, symbolizing life's complexities and duality.

Drawing inspiration from the dandelion's life cycle, the collection evokes themes of new beginnings and the inevitability of change. Through intricate craftsmanship, it captures the essence of transformation, reminding us of the beauty found in embracing the unknown.



On This Project

Products



Dandelion
Soffione
Large



Dandelion
Ray
Large

The Classical Duet of White and Gold

Project by Victoria Faynblat

For this elegant country house near Yalta, the design draws inspiration from the Art Deco era and the works of Gustav Klimt, embracing clean lines, rich decorative elements, and a love for golden hues.

The classical duet of white and gold, a combination that demands exquisite taste and design expertise, is masterfully brought to life in this interior. **Glamour** and the **Nenufar Collection** were chosen to elevate the project, infusing it with sophistication and charm.



Meet the Interior Designer

Victoria Faynblat

Victoria Faynblat believes that a truly personalized home design reflects and shapes an individual's identity. Guided by each client's lifestyle, habits, and vision, Victoria creates spaces that are not only beautiful but deeply personal. You set the direction—she brings the space to life.



On This Project

Products



Glamour
Glaze
Medium



Glamour
Glaze
Large



Glamour
Stalactite
Small



Nenufar
Bowl
Wall



Nenufar
Lutea
Ceiling



Nenufar
Water Lily
Medium

The Ice Palace

Project by Archimania

Beneath the quiet stillness of a winter day, the Ice Palace emerges in a seamless blend of white and grey, its walls crafted from white wood and delicately framed with gypsum, resembling the quiet beauty of freshly fallen snow. The Calacatta marble floor glimmers below, its cool veins enhancing the frosty elegance that fills the palace.

A spiral staircase winds upward, where an exquisite **Glamour Collection** piece cascades, each branch adorned with countless icy droplets that glisten like frozen tears in the soft light.

Meet the Design Studio

Archimania

The studio was founded by Mila Uzikova and provides a full range of services in architectural design and interior design for residential and public spaces.



On This Project

Products



Glamour
Stalactite
Large

Art in Motion

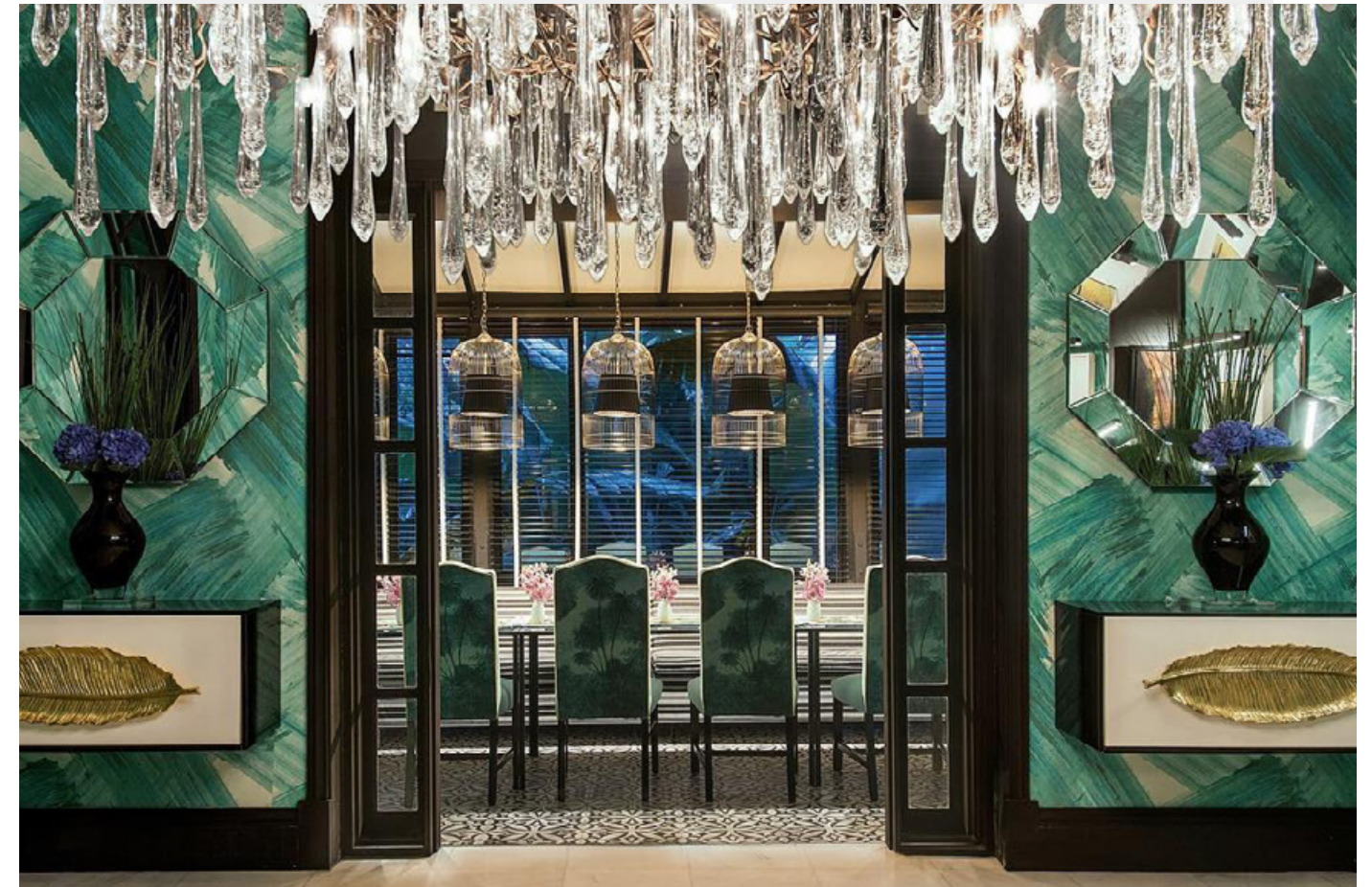
Project by Design Intervention

Nikki's decor is a vibrant symphony of bold colors, dynamic patterns, and unexpected materials, harmonized in a way that feels like art in motion. Walls appear as if painted mid-dance, with spontaneous strokes of sea green, setting the stage for palm forest-patterned chairs that contrast boldly with others in black-and-white stripes. Three striking colors swirl together effortlessly, anchored by the iconic **Aqua Collection** chandelier, its golden accents gleaming above a bold hexagonal table with mirrored surfaces in the bottom reflecting a zebra-print rug.

Meet the Design Studio

Design Intervention

Founded by Nikki Hunt, Design Intervention is a top design studio in the Asia Pacific, celebrated for its creativity and meticulous attention to detail. With numerous accolades in sectors like retail and architecture, the studio sets the standard for design excellence.



On This Project

Products



Aqua
Empire
Large

Transforming Spaces with Artful Design

Project by Absolute Interior Decor

In the open-concept kitchen, living, and dining area, Mila defined each zone with luxurious floor rugs, chosen for their unique textures and colors, creating a warm, inviting atmosphere.

A standout feature was the **Aqua Collection** Curtain, a stunning centerpiece that added depth to the design. Its tree-inspired motif, adorned with delicate glass pendants, softened the stark divider between the dining and kitchen areas. The pendants, hanging like shimmering jewels, evokes raindrops glistening on branches in a rainy day.

Meet the Design Studio

Absolute Interior Decor

Absolute Interior Decor is a London studio specialized in luxury residential projects, leveraging over 16 years of experience to offer personalized design services and manage every stage of construction, ensuring a seamless process that enhances property value.



On This Project

Products



Aqua
Curtain
Medium

Casa Alegra

Project by Yvette Taylor London

As you descend to the lower ground floor, a breathtaking **Pathleaf Collection** sculpture draws your gaze upward, its leaf-inspired form illuminated by soft, ambient lighting that transforms the space into an artistic journey.

The sculpture's fluidity and ethereal glow create a sense of grandeur, turning the hall into a captivating experience. In the spa, this artistic elegance continues with backlit leaf-like sculptures casting delicate shadows, enhancing the serene atmosphere.

Meet the Design Studio

Yvette Taylor London

Yvette Taylor is the inspirational founder and Creative Director of the studio. She has worked as widely as Geneva, Verbier, Mallorca, Marbella and Munich and has successfully completed over 80 luxury interior design projects.



On This Project

Products



Pathleaf
Crescent
Extra Large

The Luxury Vitalhotel Project

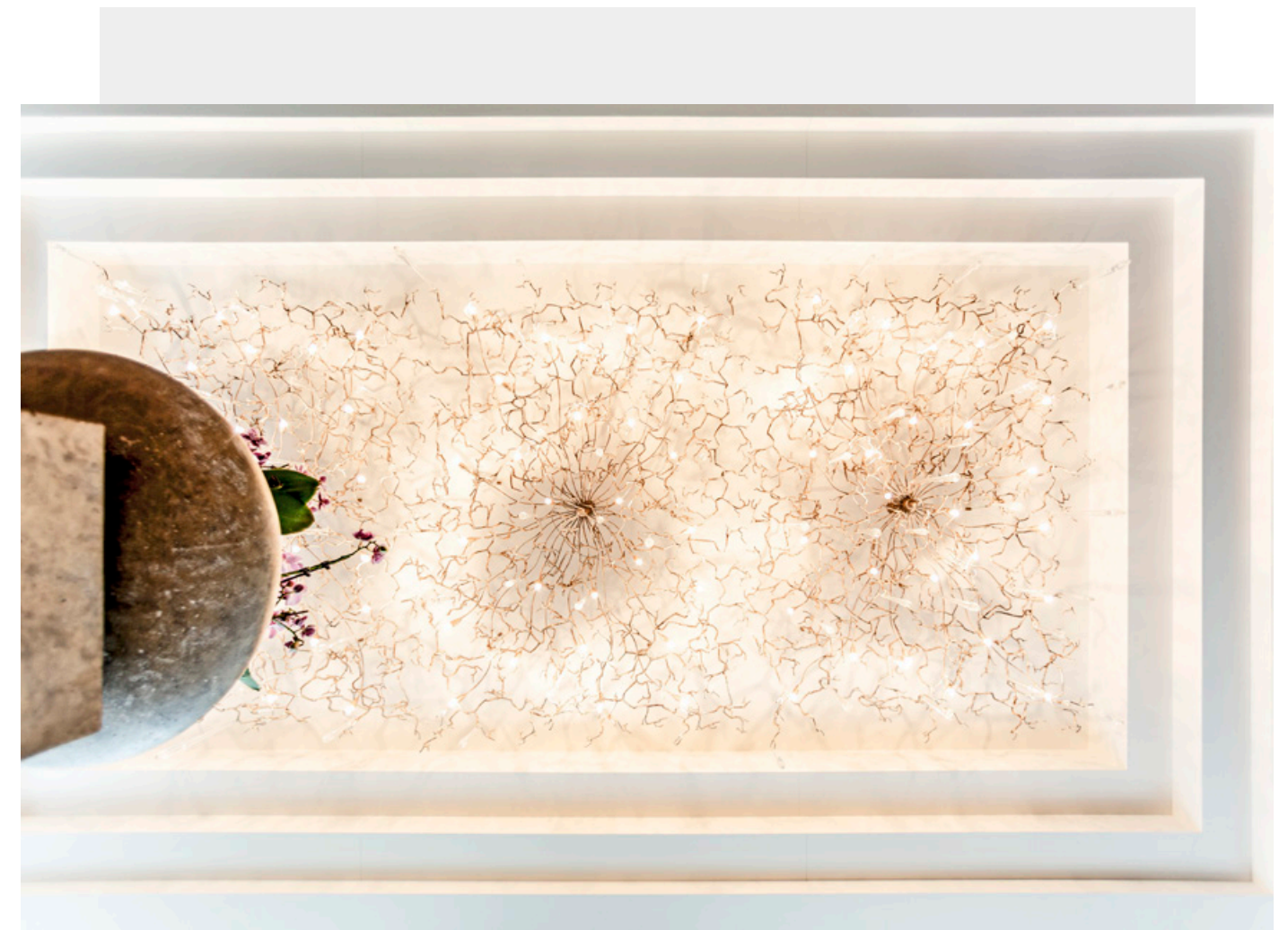
Project by Vitalhotel

Much like a delicate heder vine climbing a tree, the **Aqua Collection** curtain ascends gracefully toward the stunning coffered ceiling, a breathtaking fusion of art and architecture.

In the heart of the VitalHotel Alter Meierhof in Germany, this bespoke creation weaves a shimmering tapestry of gold, casting a radiant, inspiring glow over the restaurant.

Spanning four meters long and two meters wide, it transforms the space into an immersive experience, inviting guests to dine beneath an atmosphere of pure elegance.

Each glass detail sparkles like morning dew, reflecting the hotel's unwavering dedication to refined luxury and the beauty of craftsmanship.



On This Project

Products



Aqua
Tailor
Made

Villa New Water

Project by Waterstudio.NL

For Villa New Water, the client envisioned a home that would remain timeless and modern for decades to come.

Architect Olthuis answered with a stunning design, featuring a sweeping, curved façade that merges his industrial design expertise with refined architecture. To elevate the space, the iconic **Aqua Collection** was selected, adding a luxurious touch that complements the bold, modern lines of the villa.



Meet the Design Studio

Waterstudio.NL

Waterstudio.NL is an architectural firm located in the Netherlands that is confronting the challenge of developing solutions to the problems posed by urbanization and climate change.

Waterstudio.NL



On This Project

Products



Aqua
Makrama
Ceiling



Aqua
Mantle
Ceiling



Aqua
Empire
Large

Vibrant Textures, Bold Colors

Project by L'atelier Fantasia

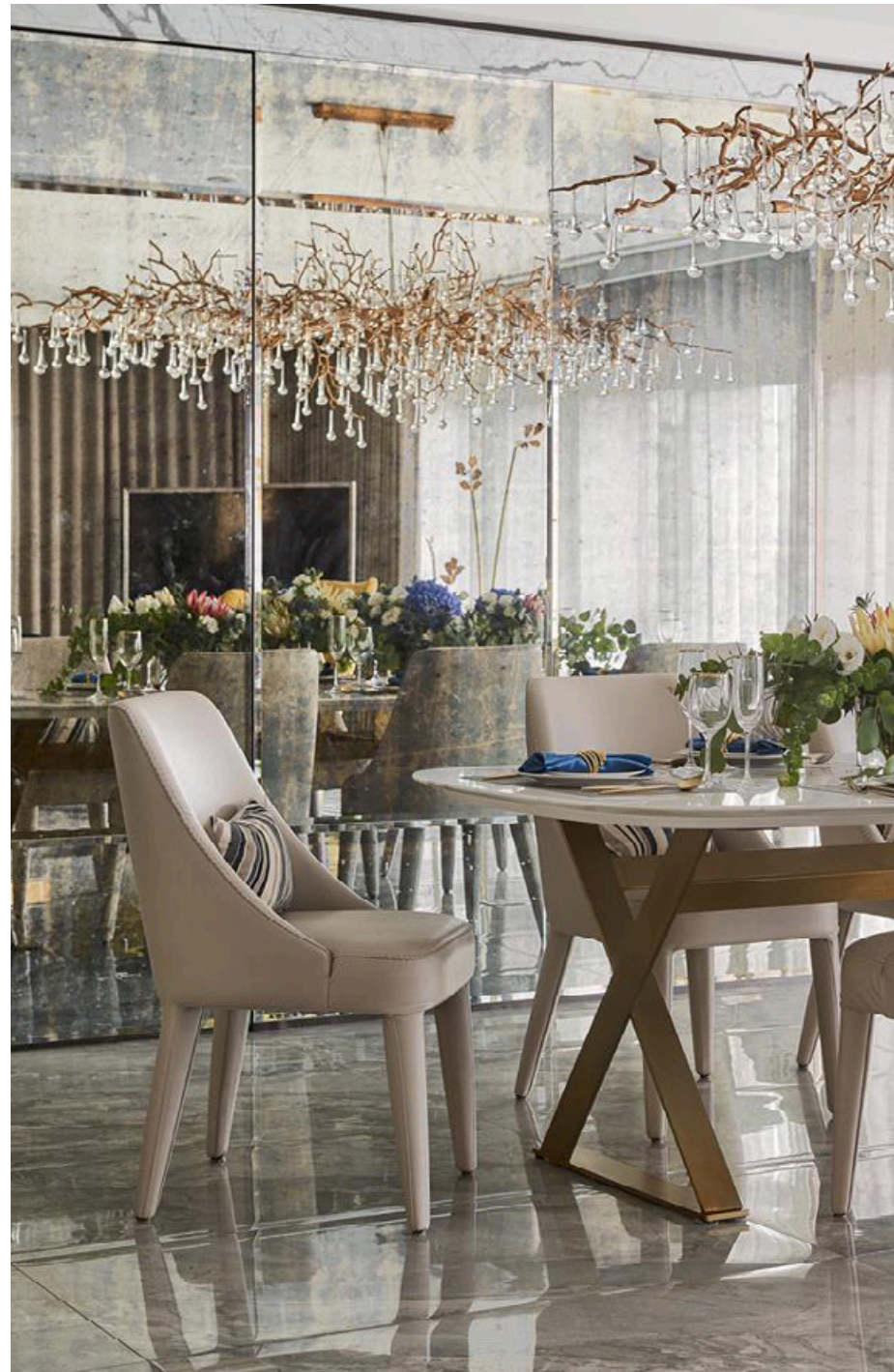
The captivating contrast of dark velvet blue and striking mustard yellow ignites the space, while the mix of stripes, marble, and gleaming gold accents creates a dynamic and elegant atmosphere.

Ascending the marble wall is the breathtaking **Nenufar Collection** wall lamp, crafted with exquisite Murano glass, adding an artistic flair that dazzles the eye. Above the dining table, the **Bijout Collection** chandelier sparkles like a piece of jewelry perfectly echoing the room's opulent gold vibes.

Meet the Design Studio

L'atelier Fantasia

L'Atelier Fantasia is born from a poem that the design director read as a child and that took her along the paths of interior design. The design studio has many years of experience with the support of highly respected construction companies that assist in the realization of projects.



On This Project

Products



Bijout
Oval
Extra Large



Nenufar
Nymphaea
Large

Elegance With a Playful Twist

Project by Ace Design

An intricate ceiling design enhances the space, while a **Coral Collection** chandelier serves as a focal point, infusing natural elegance. In contrast, the dining room features a playful yet refined aesthetic centered around a round table with carved scroll legs and green velvet chairs.

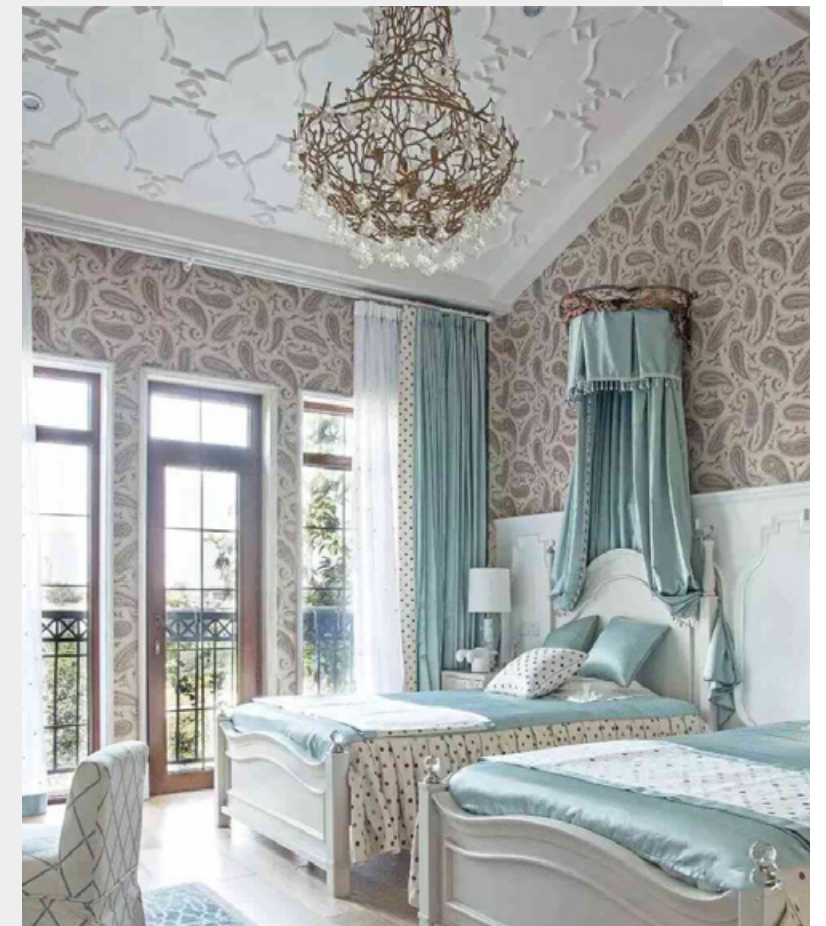
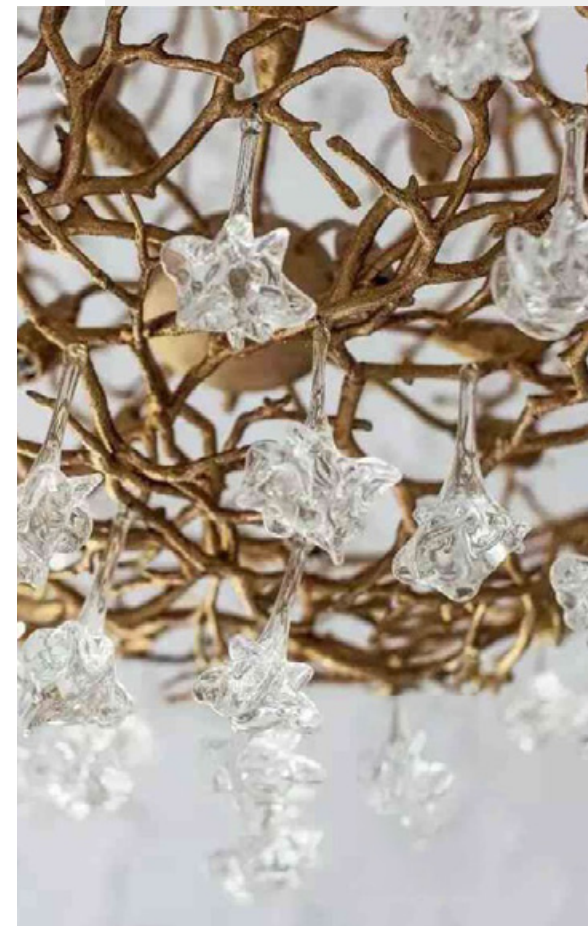
A textured ceramic vase filled with greenery adds an organic touch, while the vibrant **Bijout Collection** chandelier introduces whimsical charm, blending sophistication with a fairytale-like quality.

Meet the Design Studio?

Ace Design

Alyssa Xie founded ACE DESIGN in 2010 to enhance contemporary housing with healthy residential design. Specializing in mansion and commercial spaces in China, the design studio emphasizes health, elegance, and warmth through its "Healthy Housing System".

ace acedesign



On This Project

Products



Bijout
Crab
Princess



Coral
Royal Emperor
Medium

The Bangalore Residence

Project by Vinita Chaitanya | Photography by Shamanth Patel

The serene ambiance of this home evokes the tranquility of a temple, with soaring ceilings and expansive open spaces that inspire peace and reflection. A striking brass door, inspired by the Tree of Life, welcomes visitors alongside a delicate floral painting and a luminous piece from the **Aqua Collection**, enhancing the atmosphere.

In the dining area, a glass tabletop rests on a blue-grey crystal base from Daum, complemented by a stunning chandelier from the **Icarus Collection**.

Meet the Designer

Vinita Chaitanya

Vinita describes her style as 'contemporary classic' – a euphoric blend of sumptuous silks, traditional paisleys, exquisite Indian artefacts and modern Western covetables. She delightfully layers different cultures and periods.



On This Project

Products



Aqua
Empire
Large



Icarus
Wings
Horizontal

The Simplicity of Movement

Project by James Tu Interiors

Over the dining table is represented something that contrasts brilliantly with the pearly tone of the chairs that surround this dark glass table.

The chandelier from the **Lotus Collection**, inspired by the blossoming interlace of the lotus flower with an inspiring sense of movement almost like a living sculpture of growing light. The glass that forms this egg-shaped sculpture emits a light that surrounds the entire piece as a single organic silhouette.

Meet the Design Studio

James Tu Interiors

James Tu and his team aim to satisfy the different needs of each client, to combine specialists in architecture, interior design, furniture design, among other professionals where teamwork is done with the highest quality to satisfy the high requirements of customers who value the aesthetics of space.

 JAMES TU INTERIORS



On This Project

Products



Lotus
Horizontal Bloom
Small

The Art of Tailor-Made

Project by Miming Kartawinata

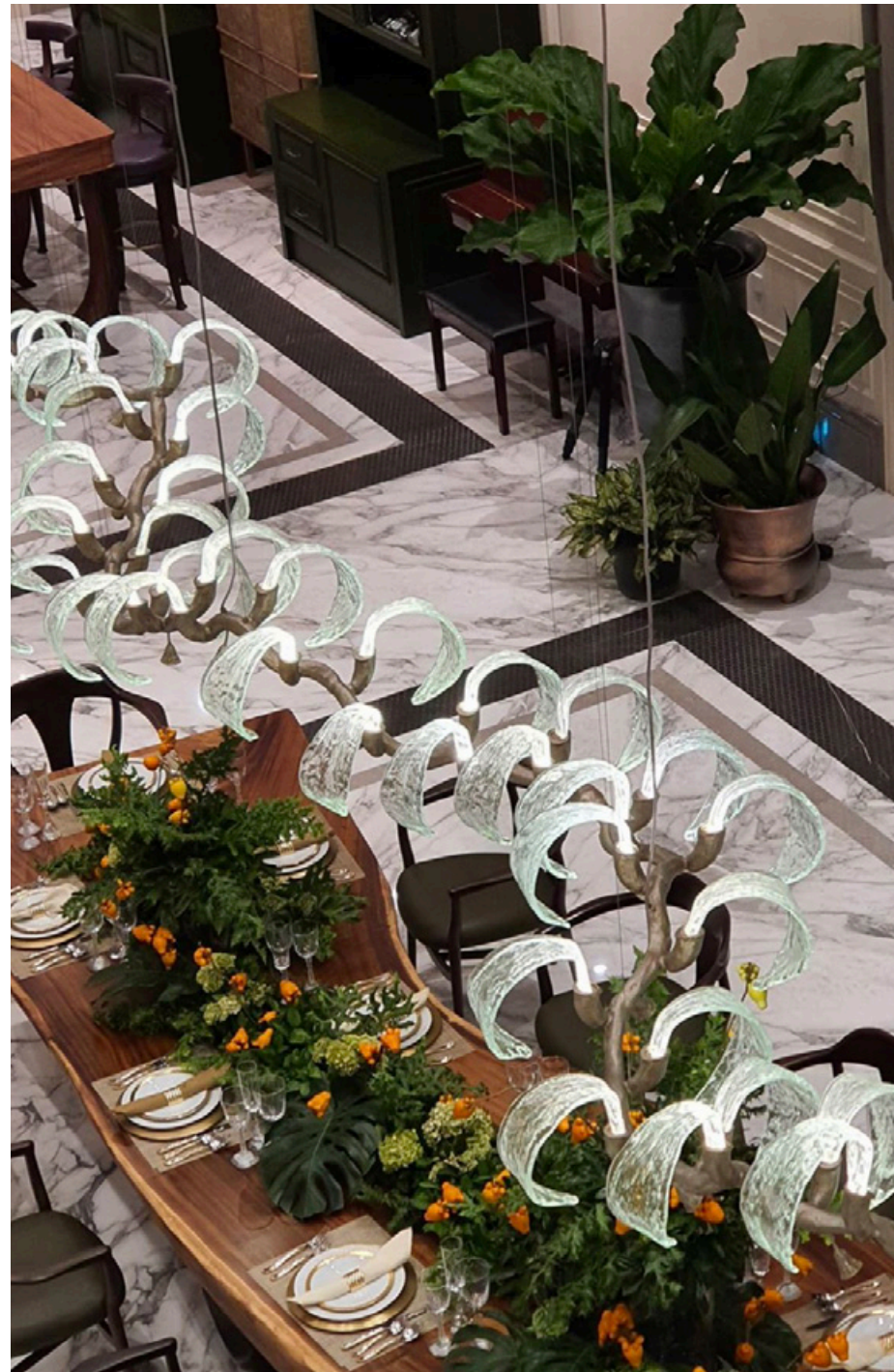
The beauty of our pieces is rooted in their inspiration from nature and the ability for clients to customize them. Miming Kartawinata has tailored a stunning piece from the **Icarus Collection**, enhancing its length and strength to grace a magnificent dining table.

The branch-like cast dances across the surface like a graceful snake, while the arched glass shapes evoke a water fountain, bringing a captivating elegance to the scene.

Meet the Designer

Miming Kartawinata

Miming, whose passion admittedly ascent from architecture to the art of interior design along the way, is arguably the seminal boundary breaker in a notoriously bordered classical and contemporary design.



On This Project

Products



Icarus
Tailor
Made

Tradition with a Touch of Magic

Project by SIO

The **Aqua Collection**, a golden masterpiece in the living room, casts a luminescent enchantment with its interplay of beige and blue hues, creating a symphony of contrast and harmony.

Every corner exudes magic, notably with the **Voa Collection** piece in the kitchen, where delicate glass swallows cast ethereal light, encapsulating a perfect blend of tranquility and elegance, making this flat a beacon of high-end interior design.

Meet the Design Studio

SIO

SIO Architecture firm was founded in 2007 by an ambitious and talented designer, Igor Sitkilov. Igor's mission is to create spaces and style where you can live beautifully, work efficiently and relax comfortably.

SIO



On This Project

Products



Voa
Mobile
Medium



Aqua
Empire
Medium

The Modern Chateau

Project by J Layton Interiors | Photography Michael Blevins

In a stunning Modern Chateau nestled in Charlotte, a twinkling masterpiece from the **Waterfall Collection**, artfully customized by Layton Campbell Interiors, graces the dining table with its luminous presence.

The rich, dark stain on the furnishings by Hellman Chang grounds the space, while neutral fabrics subtly frame the breathtaking view, ensuring it remains the room's focal point.

Meet the Design Studio

J Layton Interiors

Layton's work, known for its versatility and originality, avoids a routine standard appearance by combining varied styles to create personalized designs that surpass client expectations.



On This Project

Products



Waterfall
Rainbow
Medium

The National Charm

Project by Raúl Martins

The Portuguese Embassy has been remodeled to showcase sophisticated craftsmanship and unique materials, featuring a collaboration between Raúl Martín's design studio and top Portuguese designers. In the living room, pieces from the **Pathleaf Collection** are highlighted, showcasing gold leaves that harmonize beautifully with other elements, creating a dramatic artistic effect.

The **Folio Collection** reflects natural shapes and intricate patterns, enhancing the enchanted ambiance of the space.

Meet the Design Studio

Raúl Martins

With ingenuity and passion for design, Raul Martins' Studio's multidisciplinary team come from core distinct but complementary backgrounds in Interiorism, Architecture, Decoration and Graphic Design.



On This Project

Products



Folio
Twig
Right



Pathleaf
Heap
Small

Blending Nature with Gold

Project by L'atelier Fantasia

In a serene corner of the entrance, a mystical bloom from the **Nenufar Collection** hovers gracefully, almost touching the ground while defying gravity. Flanking the entrance, two wall lamps from the **Waterfall Collection** sit on either side, illuminating the space with a warm light.

As you enter the room, the soft glow of the **Aqua Collection** brightens the dining table, where glass shimmers in tones of green and gold. Beside the chandelier, a stunning **Pathleaf Collection** piece, all cast in gold, enhances elegance on the wall.



Meet the Design Studio

L'atelier Fantasia

L'Atelier Fantasia is born from a poem that the design director read as a child and that took her along the paths of interior design. The design studio has many years of experience with the support of highly respected construction companies that assist in the realization of projects.



On This Project

Products



Aqua
Empire
Large



Pathleaf
Foliage
Large



Waterfall
Segmented
Slim



Voa
Branch
Small



Nenufar
Bonsai
Large

In the Heart of Marylebone

Project by Raven & Lack | Photography by Kate Martin

Nestled in the vibrant heart of Marylebone, this apartment showcases a seamless blend of client vision and artistic expertise. Inspired by a Paris trip where the clients fell in love with **Folio Collection's** shimmering autumn leaves, the living room ceiling underwent a breathtaking transformation. The Folio pieces elegantly meander across the space, framing the room with fluid artistry.

In the kitchen, soft pastel tones provide a backdrop for a striking centerpiece from the **Glamour Collection**: a clear glass fixture in a luxurious copper finish.



Meet the Design Studio

Raven & Lack

Adriel and Rae forged an unbreakable friendship while working at an award-winning architectural practice in Australia in 2006. Later, Adriel joined Rae in London, where they established the brand Raven & Lack, reflecting their creative vision and collaborative spirit.

RAVEN and LACK



On This Project

Products



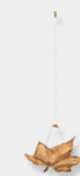
Folio
Branch
Medium



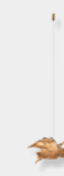
Folio
Tailor
Made



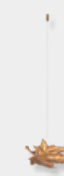
Glamour
Ice Crystals
Medium



Folio
Simple Metal
Large B



Folio
Simple Metal
Medium A



Folio
Simple Metal
Medium B

The Irish Country Home

Project by Atelier Belfast

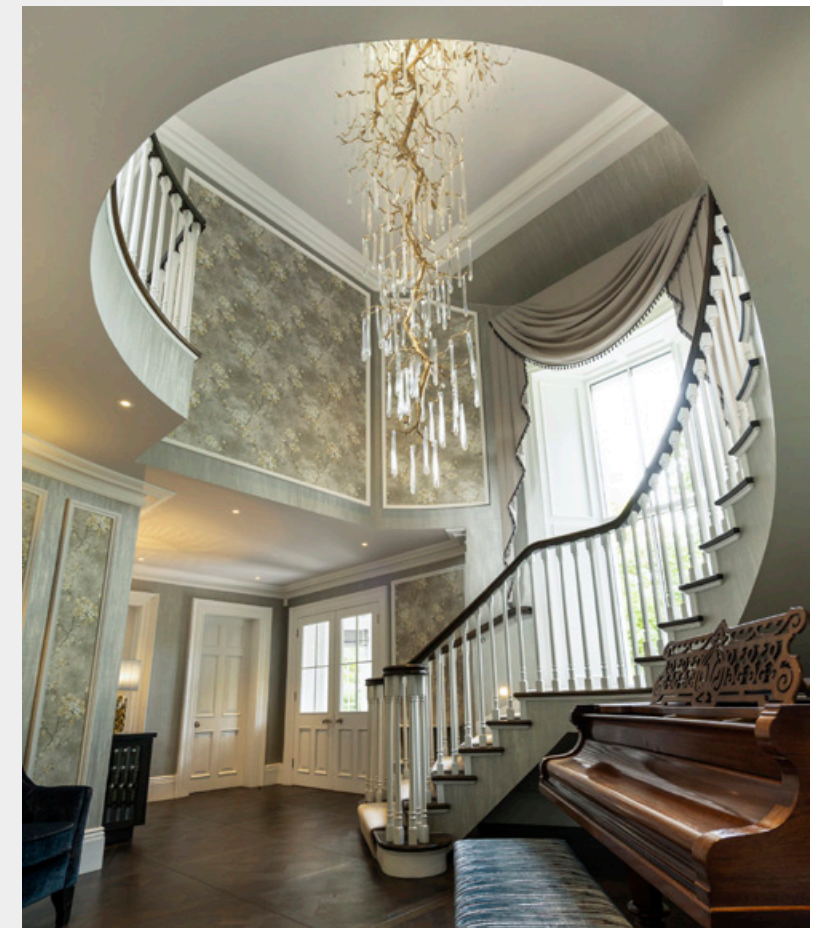
Atelier Belfast design for the Monaghan project's entrance hall creates a grand introduction to the home, featuring refined wall panels that enhance spatial proportions and complement the staircase's sweeping lines.

A striking three-and-a-half-meter chandelier from the **Glamour Collection** serves as a captivating centerpiece, crafted from resplendent gold and inspired by nature. This exquisite design infuses the Irish Country Home with elegance and the tranquil beauty of nature.

Meet the Design Studio

Atelier Belfast

This creative design team specializes in crafting unique spaces that reflect each client's style. With a focus on detail and bespoke furnishings, they create proposals for homes and commercial spaces that integrate fresh ideas and individual preferences.



On This Project

Products



Glamour
Stalactite
Large

A Northern Irish Family Home

Project by Atelier Belfast

This Northern Irish family home exudes refined luxury, where the gleaming **Aqua Collection** chandelier serves as the dazzling centerpiece, casting a warm and inviting glow. Quiet tones and rich textures harmonize beautifully with elegant finishes, creating a timeless and sophisticated atmosphere throughout.

In the dining room, a larger version of the same **Aqua Collection** chandelier mirrors the elegance of the living space, adding sparkle to the soft pastel and gold palette that unites both rooms.

Meet the Design Studio

Atelier Belfast

This creative design team specializes in crafting unique spaces that reflect each client's style. With a focus on detail and bespoke furnishings, they create proposals for homes and commercial spaces that integrate fresh ideas and individual preferences.



On This Project

Products



Aqua
Empire
Small



Aqua
Empire
Medium

The Malone Penthouse

Project by Atelier Interior Design

The goal was to create an elegant and timeless space blending classical and contemporary design. The designer placed emphasis on creating a bespoke and sophisticated environment; a haven within the modern city's hustle and bustle, where luxury meets seamless living.

For this project the Northern Irish Design Studio carefully hand-picked the perfect lighting to emphasise the entry - the stunning **Nenufar Collection** chandelier acting as a whimsical suspended sculpture.

Meet the Design Studio

Atelier Interior Design

Atelier Interior Design, an award-winning consultancy and showroom owned by Victor Branco and James Fairley, specializes in luxury interior design and architecture for private clients and developers.



On This Project

Products



Nenufar
Bonsai
Medium

A Daring Fusion of Green and Purple

Project by L'atelier Fantasia

The **Niagara Collection** chandelier, cast in radiant gold, hangs above the dining table, casting a warm glow that sparkles against the exquisite glassware and stone tabletop.

In the living room, the **Bijout Collection** chandelier features delicate drop-shaped glasses in purple and yellow, enhancing the room's vibrant vibe. The **Waterfall Collection** chandelier on the wall adds a striking wow factor with its beautiful purple glasses, proving that bold colors can elevate any chic interior design.

Meet the Design Studio

L'atelier Fantasia

L'Atelier Fantasia is born from a poem that the design director read as a child and that took her along the paths of interior design. The design studio has many years of experience with the support of highly respected construction companies that assist in the realization of projects.



On This Project

Products



Niagara
Falls
Ceiling



Bijout
Oval
Medium



Waterfall
Segmented
Slim

Under the Swallows Dance

Project by L'atelier Fantasia

Hovering gracefully above the table is a piece from the renowned **Voa Collection**, a testament to the ethereal beauty that emanates from every creation in this magical series. Within this piece, swallows come to life, their forms delicately crafted to evoke a sense of wonder and whimsy.

The hallway boasts a warm ambience with wall lamps from the **Outono Collection**, cast in gold to infuse a touch of coziness.



Meet the Design Studio

L'atelier Fantasia

L'Atelier Fantasia is born from a poem that the design director read as a child and that took her along the paths of interior design. The design studio has many years of experience with the support of highly respected construction companies that assist in the realization of projects.



On This Project

Products



Voa
Tailor
Made



Outono
Ficus
Left

The Gracious Lotus

Project by L'atelier Fantasia

Who says blue, black, and shades of grey can't be blended together? L'Atelier Fantasia masterfully highlights the harmony of these colors, encouraging us to venture into new design territories and challenge traditional limits.

Set against a striking blue frame backdrop, the **Lotus Collection** chandelier hangs elegantly from the ceiling, radiating a captivating silver light. Its egg-shaped glass fragments provide a gentle illumination, casting an enchanting glow over the dining area.

Meet the Design Studio

L'atelier Fantasia

L'Atelier Fantasia is born from a poem that the design director read as a child and that took her along the paths of interior design. The design studio has many years of experience with the support of highly respected construction companies that assist in the realization of projects.



On This Project

Products



Lotus
Horizontal Bloom
Small

The Ritz Carlton Montreal

Project by Marachlian Interiors | Photography by Annie Fafard

In a stunning display of modern elegance, the Ritz Carlton Montreal showcases a luxurious living room featuring a gold wall lamp from the **Liquid Collection**. With its intricate, nature-inspired design, this piece exudes both strength and organic fluidity, perfectly complementing the room's rich brown tones and the black marble accent.

Extending this opulence throughout the hotel, the **Bijout Collection** adds a touch of grace with delicate glass droplets, like tiny jewels cascading from a golden cast.

Meet the Design Studio

Marachlian Interiors

Seta Marachlian is the founder and principal designer of Marachlian Interiors in Quebec. She specializes in creating timeless interiors that reflect her clients' lifestyles, with a focus on high-quality, customized pieces. Her portfolio features prestigious residences and luxurious chalets.

M



On This Project

Products



Liquid
Drop
Single



Bijout
Oval
Large

Staircase With a Statement

Project by Dôme Project Interiors

A stunning fusion of boldness and elegance defines this space, where the staircase becomes a statement of art. Soft pastel tones create a serene ambiance, while a black and gold handrail adds timeless luxury. Above, a beautifully detailed coffered ceiling enhances the sense of refinement, drawing the eye toward the **Coral Collection** piece below. Its golden branches intertwine gracefully capturing the flowing beauty of coral reefs, adorned with delicate glass ornaments that evoke the organic shapes and textures of marine life.

Meet the Design Studio

Dôme Project Interiors

Founded in 2005 by Cécile Demole, Dôme Project Interiors is a Geneva-based studio specializing in luxury residential, yacht, and business interiors. Offering bespoke, turn-key design services worldwide, they craft exceptional spaces tailored to each client with meticulous attention to detail.

DÔME
PROJECT INTERIORS



On This Project

Products



**Coral
Volcano**
Medium

The Jinke JiuQu River House

Project by NNS Design

The Jinke JiuQu River House beautifully merges traditional Chinese design with modern residential living. Inspired by nine iconic elements — mountains, rivers, liquor, tea, pines, Guqin, clouds, wind, and the moon — the design team aimed to integrate these motifs into a contemporary setting.

Guided by the principle “start from the new, design from the heart,” they emphasized simplicity and harmony. A standout feature that embodies this vision is the **Lotus Collection** chandelier.

Meet the Design Studio

NNS Design

Founded in 2013 in Beijing, NNS Design is a leading architectural interior design firm with branches in Shanghai and Shenzhen. With over 2,000 projects across 84 Chinese cities and 100 global awards, it combines local culture with innovative design and collaborates with European designers on exclusive projects.

NNS



On This Project

Products



Lotus
Horizontal Bloom
Small

The Golden Kitchen

Project by Mun Interiors | Photography by Ravil Ametov

Every element in this kitchen has been carefully selected. In the heart of it stands a magnificent island, bathed in golden light from above. Suspended, like a crown jewel, hangs the Serip classic chandelier from **Bijout Collection**.

Crafted with meticulous attention to detail, its intricate design, delicate clear glass shades and golden hues dance gracefully across the room, casting a mesmerizing spell upon all who behold it.

Meet the Design Studio

Mun Interiors

Mun Interiors, based in Almaty, Kazakhstan, is a bespoke furniture production company founded over 30 years ago. They create spaces that tell personal stories, reflecting the owner's journey, personality, and aspirations, while prioritizing high-quality materials and superior craftsmanship.

Mun Interiors



On This Project

Products



Bijout
Crab
Princess

A Bold RusticElegance

Project by Maisha Design | Photography by Richard Gooding

Embracing a bold rustic decor, this space by Maisha showcases a stunning palette of black, gold, and clear tones infused with luxury. Gracefully falling from a black wood beam, an **Aqua Collection** curtain in marvelous gold enhances the open area.

Suspended above the staircase, a striking piece from the **Glamour Collection** resembles a majestic tree, its branches adorned with icy drop sculptures that defy gravity. As light caresses their surfaces, they shimmer with enchanting radiance.

Meet the Interior Designer

Maisha Design

Maisha Design, a London based interior design practice, is renowned for its luxurious and timeless design solutions for both residential and commercial spaces. Every project is tailored and completed with bespoke pieces, offering a truly unique experience.

MAISHA
DESIGN



On This Project

Products



Glamour
Stalactite
Small



Aqua
Curtain
Small

Naga Upper House

Project by Shi Zhanming

Nestled in Dongcheng, Beijing, this residence offers a peaceful retreat amid the city's bustling energy. The design combines elegance and tranquility, using natural materials like light wood, oak herringbone floors, and textured wooden shelves to create a warm, contemporary atmosphere.

In the living room, the **Luna Collection** ceiling feature evokes a golden, starry sky, adding a touch of glamour. The dining area blends greys and gilded golds, highlighted by the **Bijout Collection** chandelier.

Meet the Interior Designer

Shi Zhanming

DaMing (Shi Zhanming) is a renowned interior designer and senior member of the China Architectural Decoration Association. With extensive international experience, he creates aesthetically pleasing and comfortable spaces that reflect a deep appreciation for art and culture.



On This Project

Products



Bijout
Crab
Queen



Luna
Orbit
Small



Luna
Orbit
Medium



Luna
Orbit
Large

The Alchemy House

Project by Dylan Farrel Design | Photography by Sharyn Cairns

Alchemy House, a newly constructed family home in Australia, elegantly combines the grandeur of turn-of-the-century Victorian architecture with modern elements.

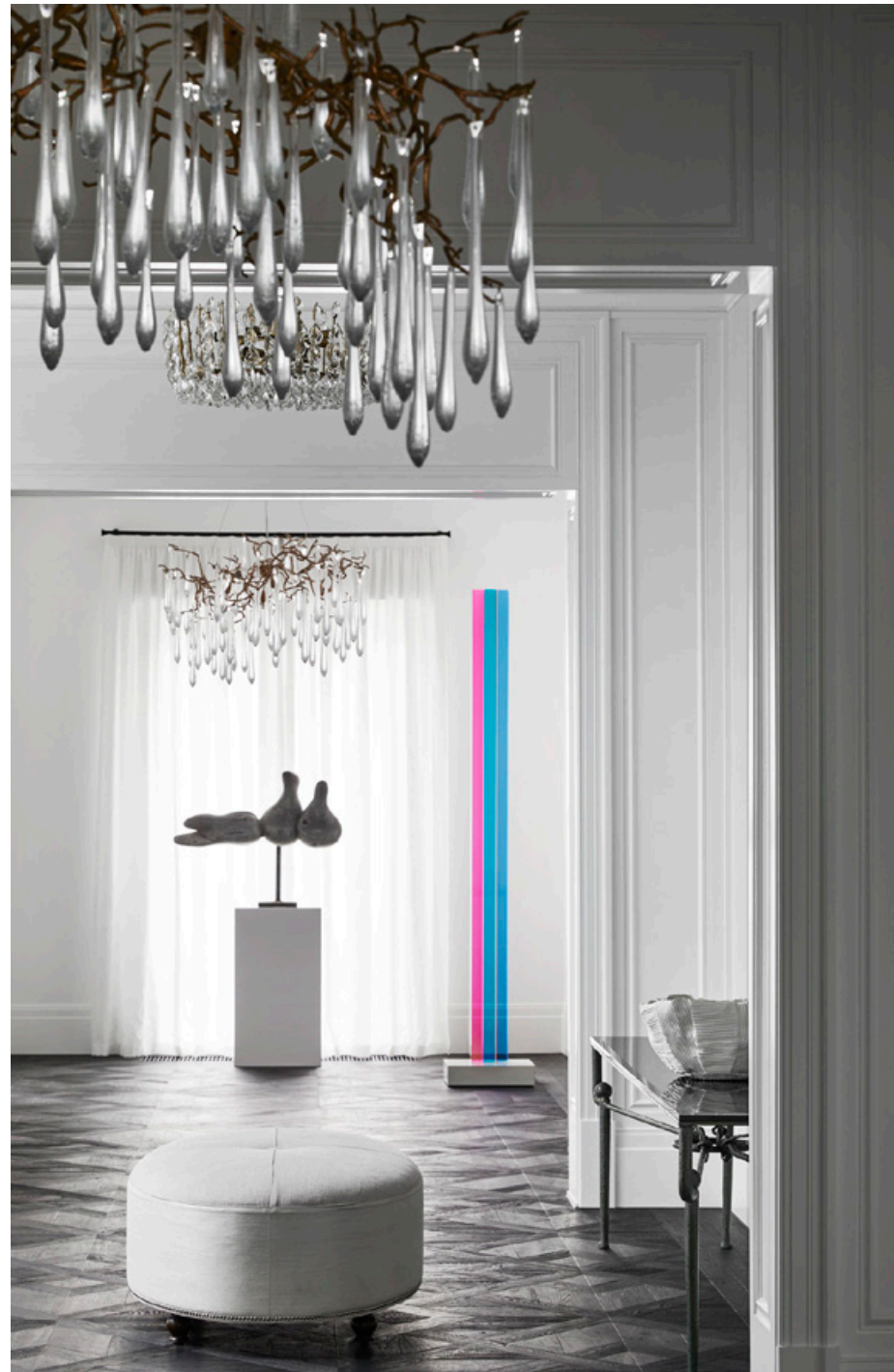
Inspired by neoclassical Parisian detailing, contemporary New York eclecticism, and Hollywood Golden Age glamour, the design features striking **Bijout** and **Aqua Collection** chandeliers that serve as both statement pieces and sculptural artworks.

Meet the Design Studio

Dylan Farrel Design

Dylan Farrell Design, founded in 2016 by Dylan and Nicolette Farrell, specializes in bespoke design services that celebrate each client's unique identity. The firm delivers timeless and innovative solutions through collaboration across various projects.

Dylan Farrell Design



On This Project

Products



Bijout
Crab
Queen



Bijout
Oval
Medium



Aqua
Empire
Medium



Acknowledgments

We would like to express our deepest gratitude to the talented design studios and visionary project designers who have contributed to this collection. Their creativity, expertise, and dedication have brought our pieces to life, showcasing their potential within a wide range of environments. It is through their remarkable work that we are able to share these inspiring spaces, offering a glimpse into how our designs can transform interiors.

To the photographers, whose artistry has captured the essence of each project so beautifully, we are truly thankful. Your work allows us to present these projects with the depth and detail they deserve.

We are honored to collaborate with such exceptional professionals and are grateful for their contribution in helping us share these captivating spaces with an intimate community of design enthusiasts.

SERIP

Intellectual Property and Use of Content

All content presented in this book is protected by intellectual property rights, being the exclusive property of their respective owners.

With the exception of content whose intellectual property rights are owned by SERIP, all other content includes the identification of the respective rights holders.

SERIP

www.seripdesign.com

